



disco walker

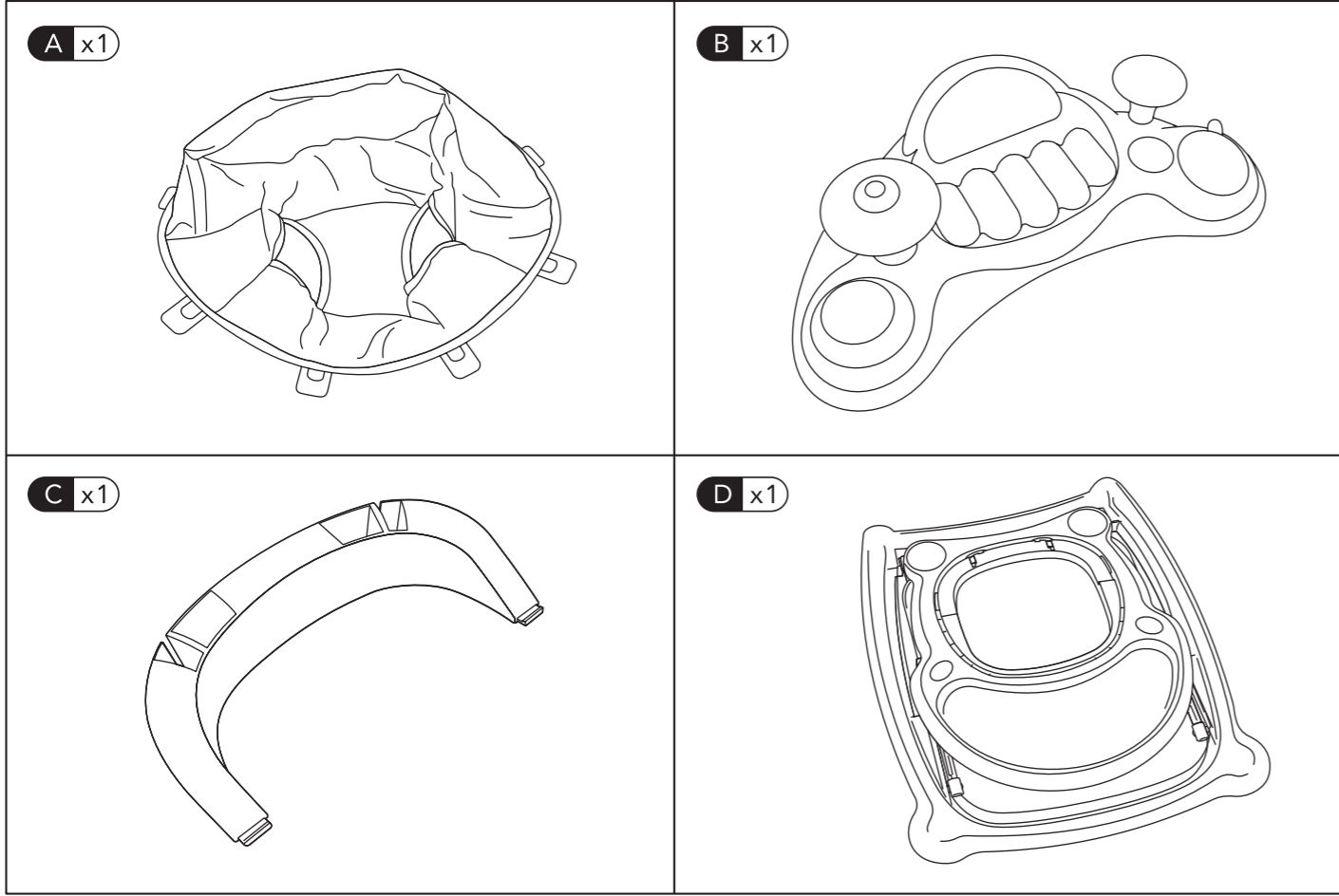
user guide

137446 0613
Early Learning Centre®
Watford WD24 6SH England.

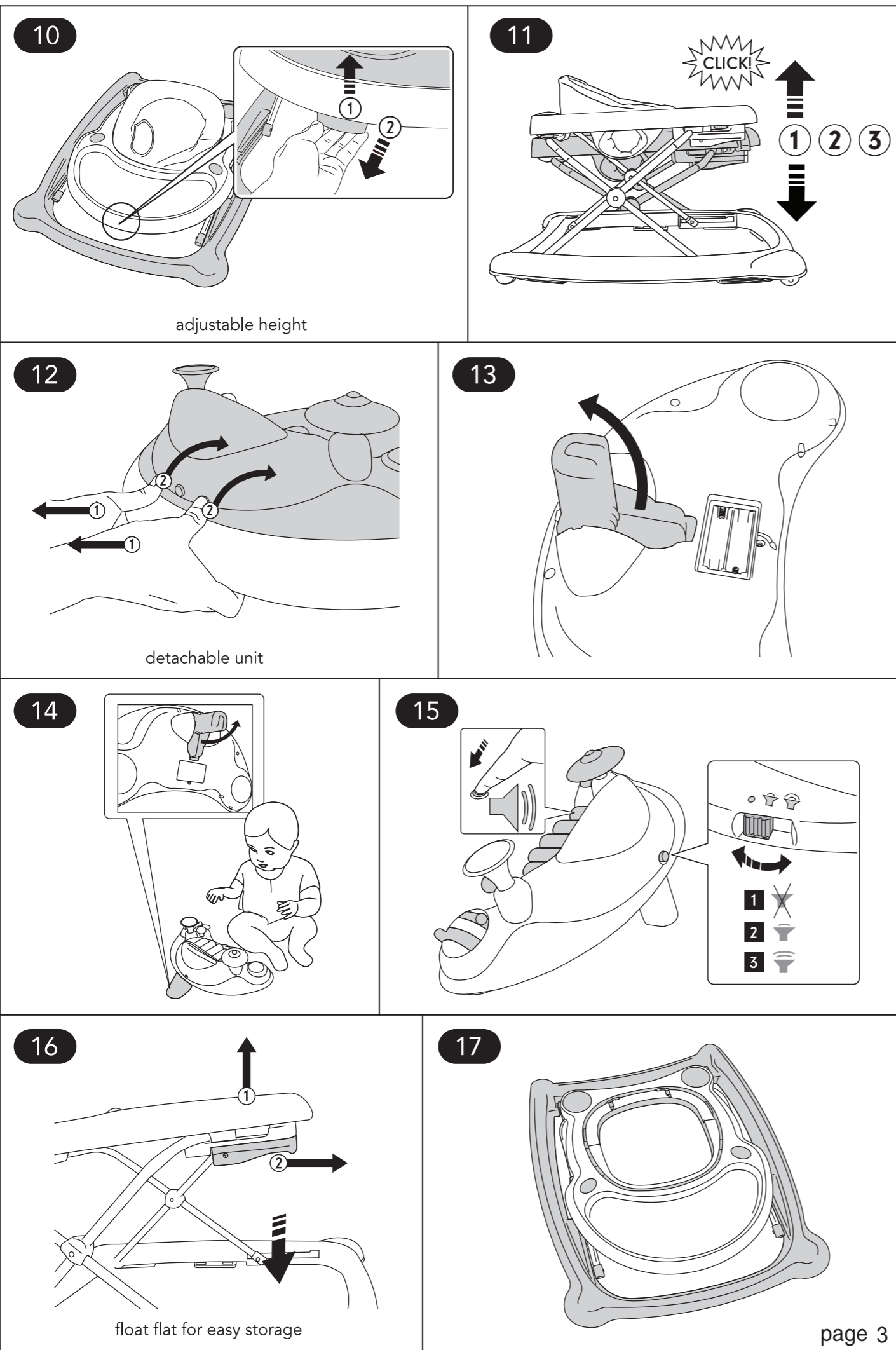
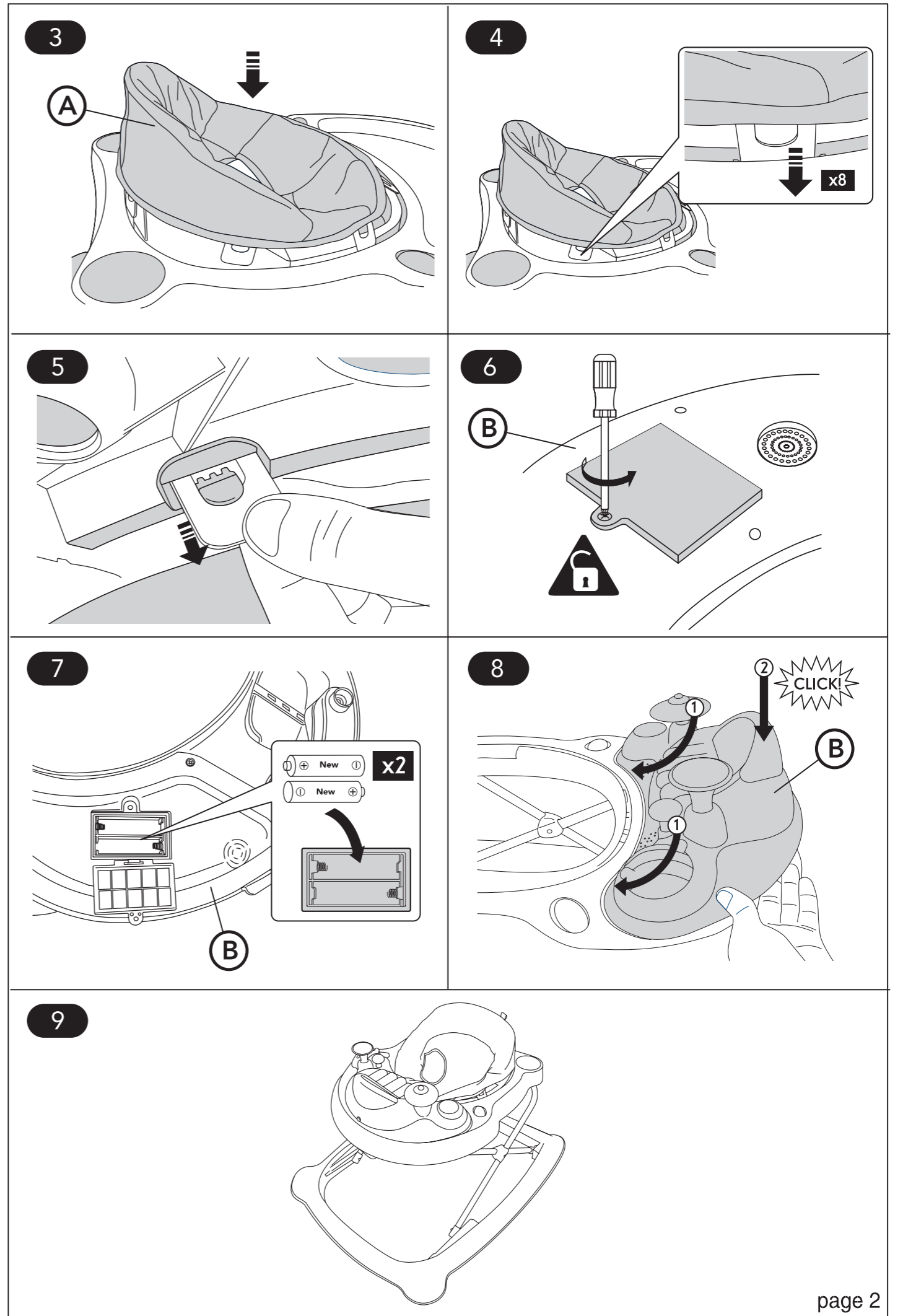
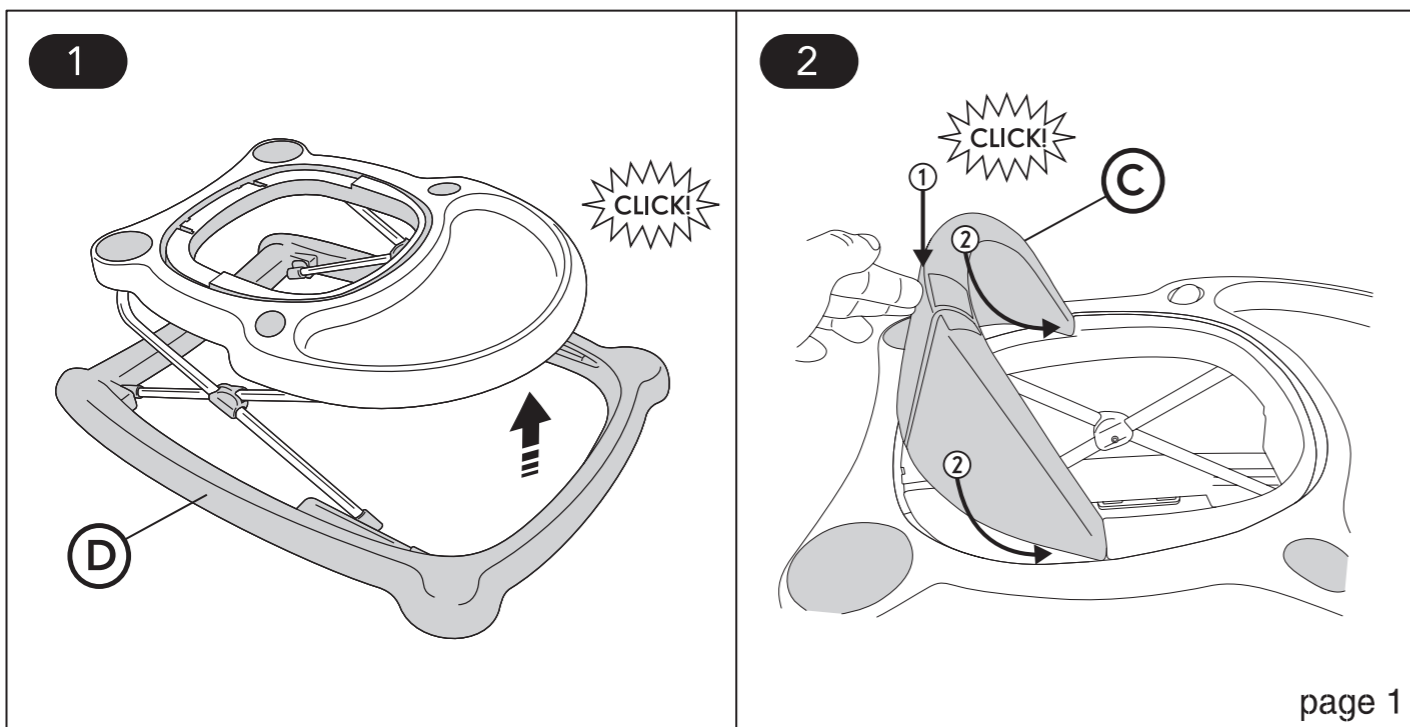
Customer Service Department
0871 231 3511

parts checklist

WARNING: Adult assembly required. Contains potentially small parts. Keep away from children until assembled.
NOTE: Please read instructions before starting to assemble



assembly



safety & care notes

IMPORTANT, RETAIN FOR FUTURE REFERENCE: READ CAREFULLY THE CHILD MAY BE HURT IF YOU DO NOT FOLLOW THESE INSTRUCTIONS.

WARNING! Never leave child unattended.

WARNING! Prevent access to stairs, steps and uneven surfaces. Only use on flat surfaces.

WARNING! Your child will be able to reach further and move faster when in the baby walking frame.

WARNING! Always lock all castors in activity mode. Unlock all castors in walker mode.

WARNING! Never carry the walker with your baby inside.

Remove hot liquids, electrical flexes and other potential hazards from your child's reach.

Prevent collisions with glass in doors, windows and furniture.

Guard all fires, heaters and cooking appliances.

Periodically check for loose or damaged parts. Do not use the baby walker frame if any components are broken or missing.

This baby walking frame should only be used for short periods of time, e.g. 20 minutes at a time.

This baby walking frame is intended to be used by children who can sit unaided, approximately from 6 months.

Only use replacements parts supplied by Mothercare. Others may render the baby walker unsafe.

The rubber pads on the base should be regularly inspected and cleaned.

Should the rubber pads become damaged or are no longer lying flat, stop using the walker.

If pads are removed, they must be replaced with new pads supplied by Mothercare.

Both of the baby's feet should be flat on the floor. Adjust the seat accordingly.

Keep children away from the baby walker during set up and folding and when not in use.

When not in use this product should be stored away from children.

care of your product

Refer to sewn in labels for fabric care instructions.

The walker can be cleaned by sponging with warm water and mild detergent.

Do not submerge this product in water.

This product must be dried thoroughly before using or storing.

Never clean with abrasive, ammonia based, bleach based or spirit type cleaners.