



# drift racer

user guide

143448 0316  
Early Learning Centre®  
Watford WD24 6SH England.

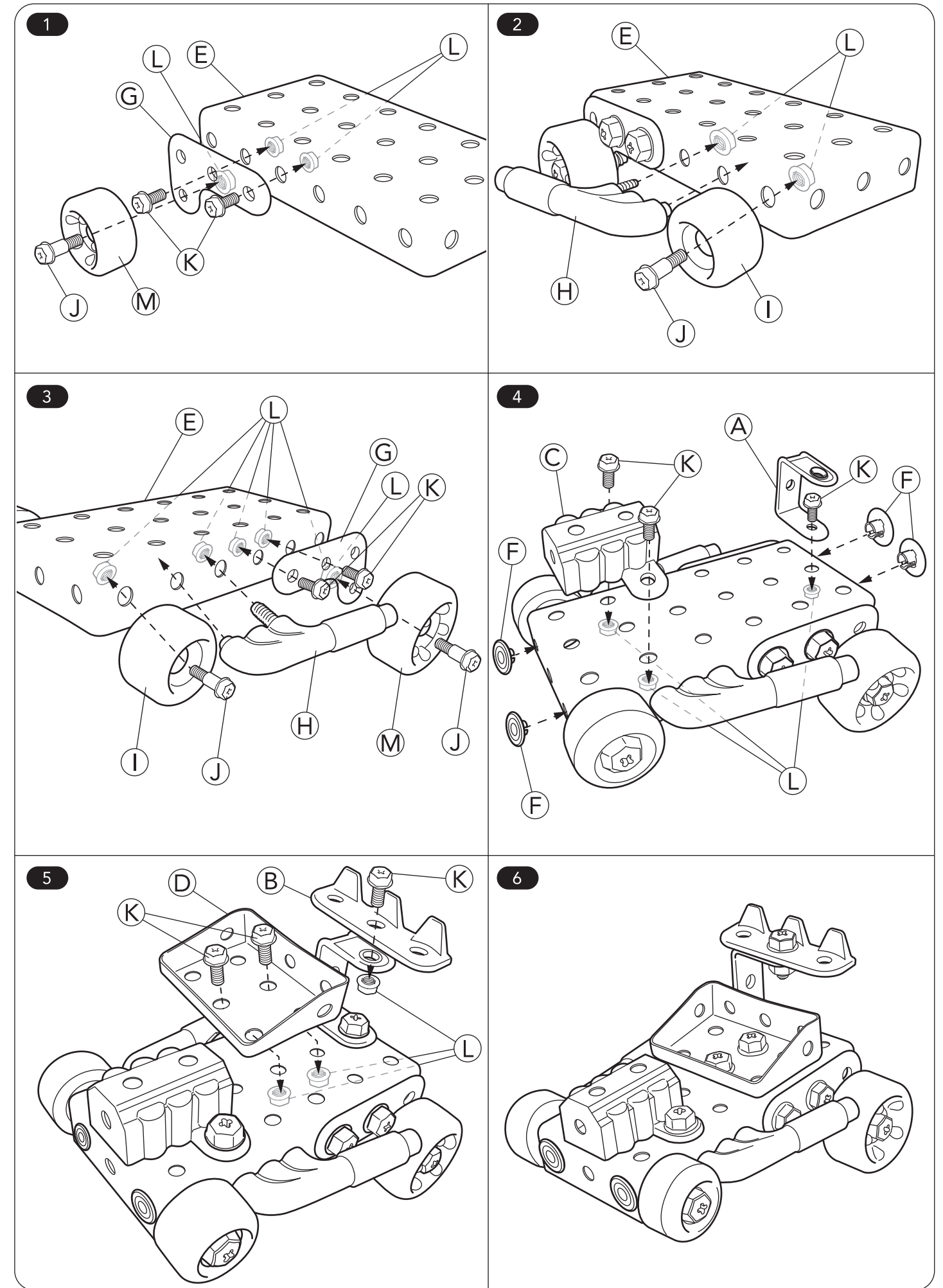
Customer Service Department  
0371 231 3513

- Make routine checks to ensure that all screws and nuts are tightened properly.
- Do not use in areas which may be dangerous (on public roads, on a slope, near stairs or steps, garden pools or swimming pools, etc).

## contents

<b>A</b> x1	<b>B</b> x1	<b>C</b> x1
<b>D</b> x1	<b>E</b> x1	<b>F</b> x4
<b>G</b> x2	<b>H</b> x2	<b>I</b> x2
<b>J</b> x4	<b>K</b> x10	<b>L</b> x16
<b>N</b> x1	<b>O</b> x1	<b>M</b> x2

## assembly



early learning centre AW16

colours:

sku number : 143448  
 product : Drift Racer  
 user guide dimensions : A4  
 supplier : Toy Park  
 date : 24 Mar 2016

category : A&A  
 designer : Lin



Black

approval	date	signature
packaging manager		
copywriter		
QA		
product manager		

NOTE: The spot colour is not accurate (simulated using CMYK) in this digital proof, please refer to the Pantone specification (or our colour key).