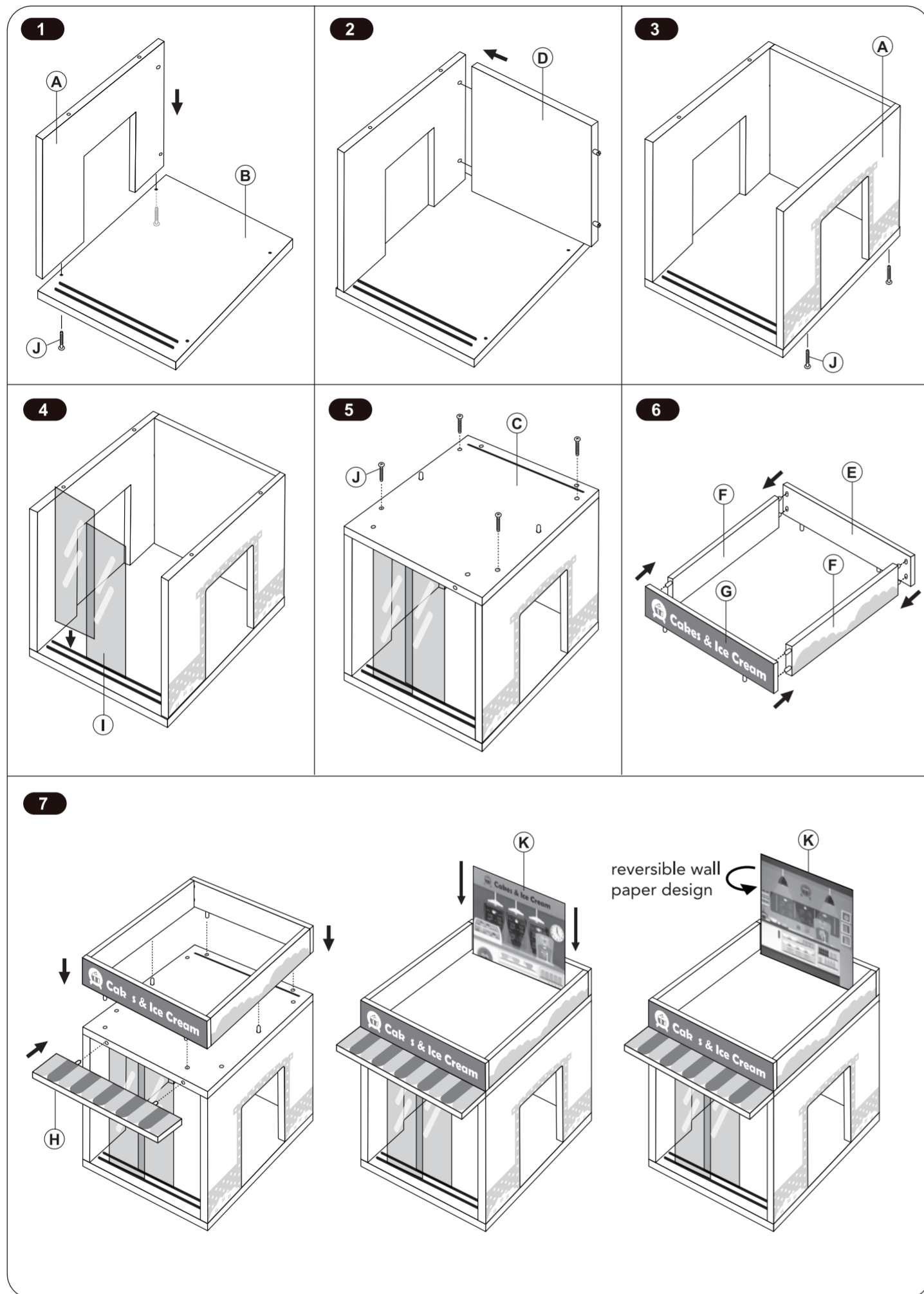


**assembly instruction - cake & ice cream**

\*\* Please make sure to count all components before you begin assembling the product.



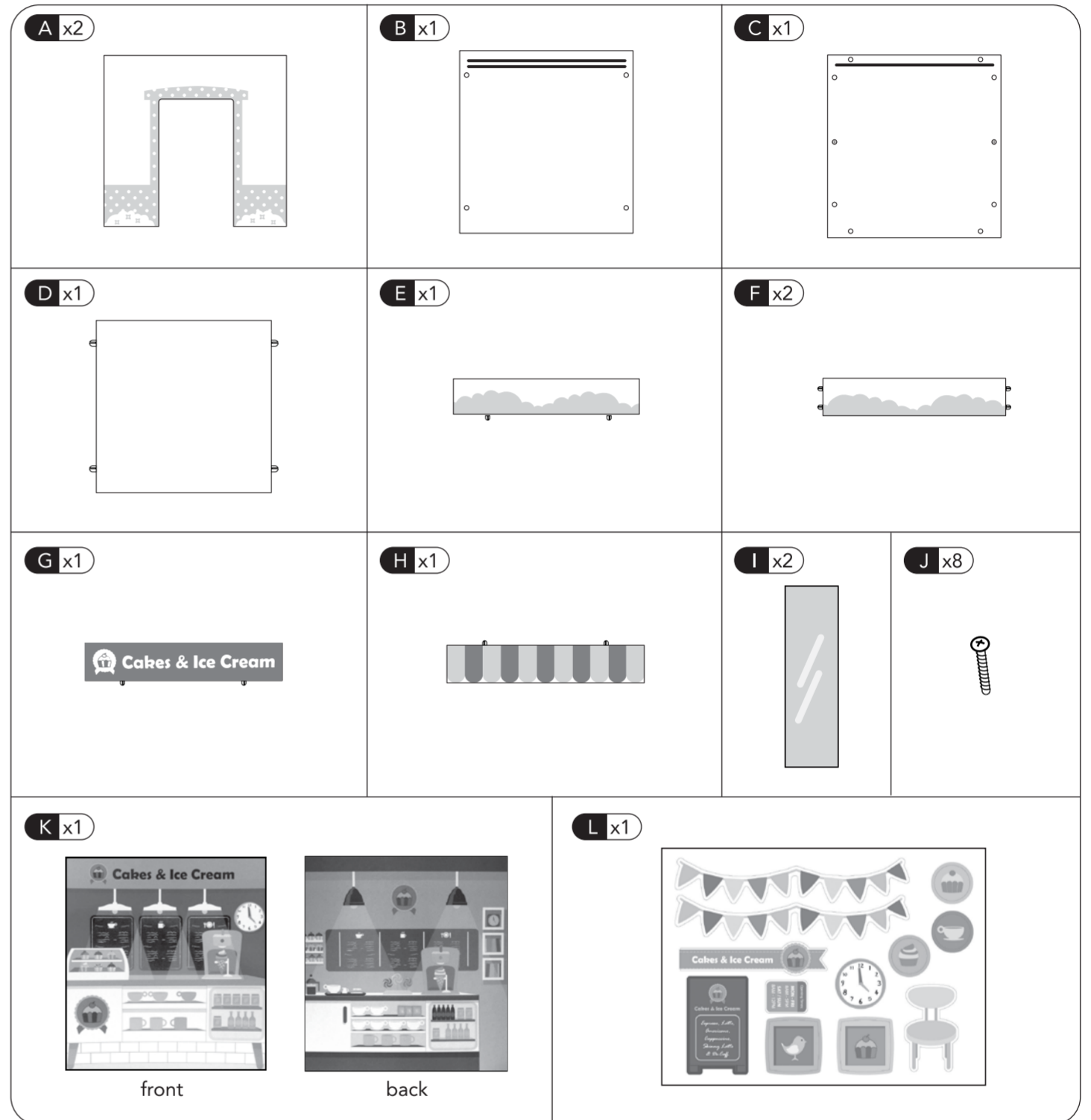
**rosebud cake & ice cream**  
user guide

141133 0315  
Early Learning Centre  
Watford WD24 6SH England.

**Customer Service Department**  
0371 231 3513

**contents**

Adult assembly required  
In an unassembled state product contains sharp points which may cause injury if misused. Not suitable for children under 3 years



**early learning centre AW15**

sku number : 114133  
product : Rosebud Cake and Cream  
pack dimensions : A4  
supplier : GJ category : LP  
date : 26 Mar 2015 designer : Man

**colours:**



**Black**

approval	date	signature
packaging manager		
copywriter		
QA		
product manager		

NOTE: The spot colour is not accurate (simulated using CMYK) in this digital proof, please refer to the Pantone specification (or our colour key).