

133152 electronic phonic pairs - Instruction Sheet

Size: A3 (Spreaded)

Pages: 4

Colour: B/W (1C x 1C)

trouble shooting

Problem	Possible solutions
The cards are not properly detected or the detection time is becoming longer.	<ul style="list-style-type: none"> The batteries may be low. Please replace them. The cards may be bent or damaged. Try to flatten them or repair them if they are torn. Check that the slots are clean and that no dust is present as it can disturb detection. Make sure when putting the cards on the slot, that they make contact with the bottom of the slot.
Speech is distorted or slow.	<ul style="list-style-type: none"> The batteries may be low. Please replace them.
Unit is not reacting to a card being placed or removed.	<ul style="list-style-type: none"> The unit is either in the OFF position or has been on standby for more than one hour. Switch the unit OFF and then ON again, selecting a game mode to resume play.
Unit is asking for card to be removed even when no card is present.	<ul style="list-style-type: none"> Place a card, wait for the unit to detect it, and then remove it. Switch the unit OFF and ON again.
Unit is behaving strangely or does not react as expected.	<ul style="list-style-type: none"> Please switch OFF and then ON again. If this does not solve the problem, please remove and replace the batteries.

battery notice

BATTERY SAFETY: Please refer to the battery warning leaflet enclosed"



electronic phonic pairs

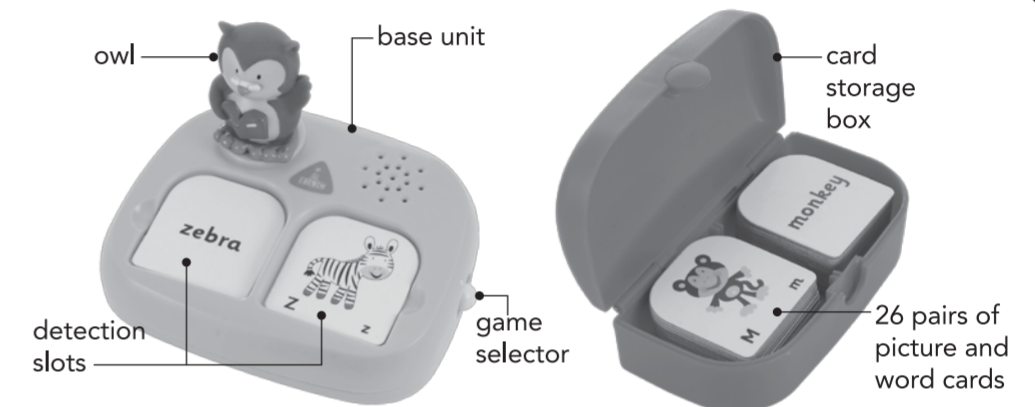
instructions

133152 0915
Early Learning Centre®
Watford WD24 6SH England.

Customer Service Department
0371 231 3513

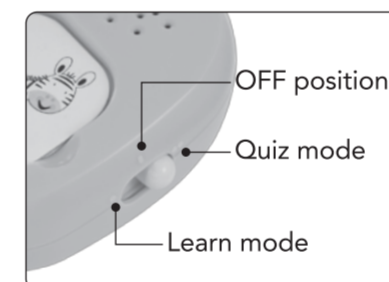
contents

- 1 x base unit
- 26 pairs of picture and word cards
- 1 x card storage box
- 1 x owl
- 1 x instruction manual



how to play

Once the batteries have been inserted correctly, the product is ready to operate.



There are 2 game modes, which can be selected using the game selector located on the side of the product.

Position : Learn mode

Position : Quiz mode

Position : OFF

Learn mode

In this mode, depending on which card is inserted, the unit states either the name of the object that is shown on the card or the first letter of the written word.

Cards can be placed on either of the two available slots. Only one card can be placed in a slot at any one time.

Once the slots are full, at least one card needs to be removed in order to keep on playing. If the slots remain full for some time, the unit will ask for the cards to be removed.

Quiz mode

In this mode, if you place a picture card on one slot, the unit will ask you to find the corresponding word card.

If you place a word card in the slot, the unit will ask you to find the corresponding picture/letter card.

If you are correct, the unit will congratulate you. If you are incorrect, it will ask you to try again. You can try as many times as you like.

NB: The unit will give you either letter sounds or letter names depending on which card is placed in the slot. Listen out for some surprising sound effects.

Note:

If the unit is left idle for some time, it will automatically go into standby mode to conserve battery life. If a card is placed or removed during the first hour after the unit has gone into standby mode, the unit will resume playing normally. After one hour, the unit will have to be switched OFF and ON again manually, in order to resume playing. Once the unit has entered standby mode, all games will resume from the beginning.

important

important information

- This product is suitable for children 3 years and over.
- The cards operate using a detector and therefore must be kept flat to enable them to work. If a card is bent, it may lead to incorrect detection. In the event of incorrect detection, try to flatten the card and replace it on the slot.
- As detection is sensitive to conductivity, putting fingers or any conductive material on the slots may lead to misdetection.
- As detection is sensitive to humidity, make sure that the cards are not submitted to moisture. Should the cards get wet, please dry them carefully before using them again.
- **Not suitable for children under 36 months.**

important notice about card usage

- To avoid misdetection, please take care to place cards flat on the bottom of the slots. There needs to be contact between the card and the bottom of the slot in order to allow the card to be identified by the unit.
- Card detection time ranges from 0.5 to 3 seconds depending on a variety of criteria. In the event that this detection time increases significantly, please replace the batteries. If a card is placed and removed within the detection time, the unit may not have sufficient time to detect it.
- If a card is placed upside down (drawing or word not visible when the card is on the slot), the unit will prompt for it to be removed or will consider it as an incorrect answer.
- If a card is placed on top of another one already in the slot, the second card is ignored (same as point above).
- If a card is removed from the slots before the related speech is said, the card will be ignored.
- If a question card is removed before the question is asked, the card will be ignored.
- The detection is sensitive to the flatness of the cards. If a card is bent, it may lead to incorrect detection. In the event of incorrect detection, try to flatten the card and replace it on the slot.
- In the event of a card being torn, it may still be usable. Please stick the edges together as close as possible to the original position. Ability to restore the card back to a usable state is dependent on the level of damage.
- If cards are lost, the game can still be used but some features may not be accessed as before (all questions related to the lost card cannot be answered).
- As detection is sensitive to conductivity, placing the fingers or any conductive material on the slots may lead to misdetection.
- As detection is sensitive to humidity, make sure that the cards are not submitted to moisture. Should the cards get wet, please dry them carefully before using them again.

care and maintenance

- To clean the unit, wipe it with a slightly damp cloth or a soft dry cloth.
- **Do not** use chemical solvents to clean the unit.
- **Do not** leave the unit in bright sunlight or any other direct source of heat for long periods.
- **Do not** drop the unit on hard surfaces or expose the unit to moisture or water.
- **Do not** take the unit apart.
- **Do not** spill anything onto the unit.